

## North Bend State Park Boy Scouts Partnership: Location Descriptions

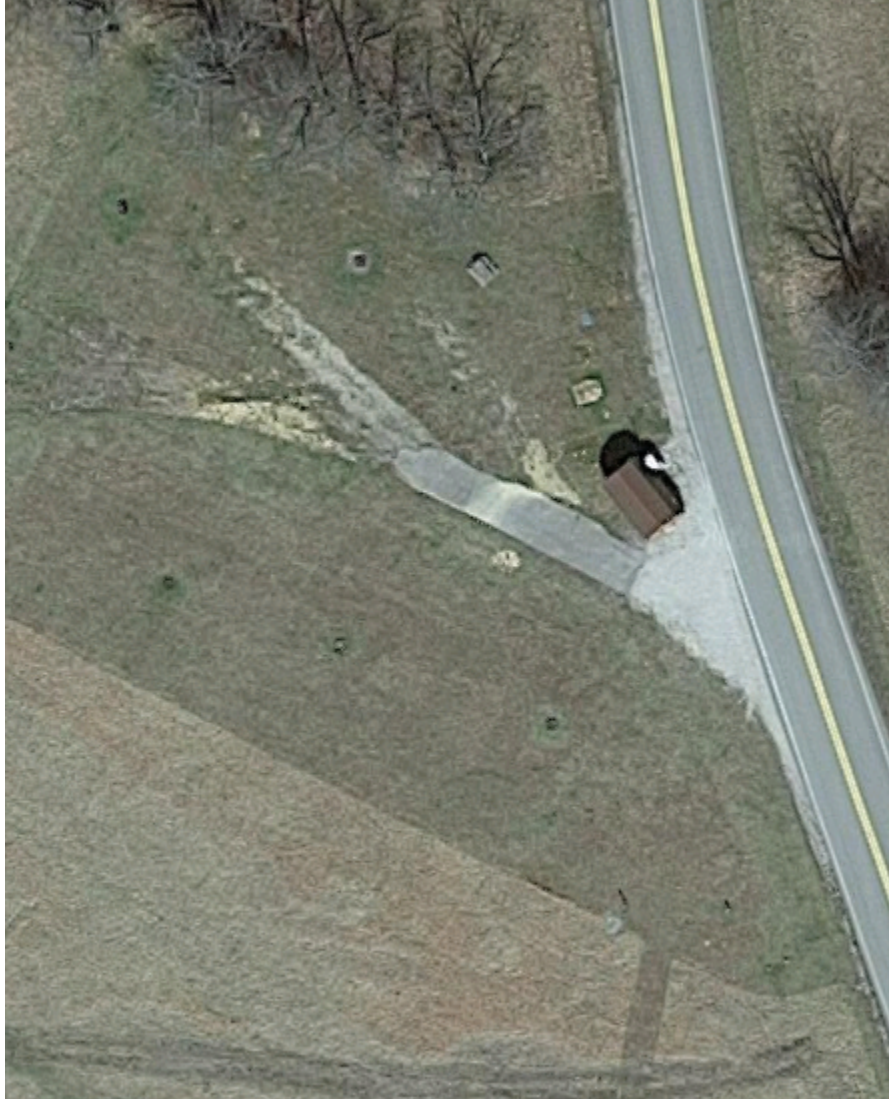
### Base Camp:



Located just below the lodge, Base Camp offers seclusion yet convenience. A bathhouse located at this site with 2 showers and 2 toilets per side. Two fire pits are located at this location (thanks to volunteer efforts from Troop 28!). Perfect area to set up tents and also have activities going. Access to Giant Tree Trailhead.

*almost heaven*

**Layfield:**



Layfield is almost a total primitive experience, with only water spigots available at the sites. This field area is exceptional for those wishing to stargaze, as Cokeley has wonderful views of the Milky Way when weather permits and it's "in season" (June-September). The road pictured is to the Campground and Boat Ramp, though the main Rt. 5 runs just across the field. A very quiet and DARK area besides the glow from the barn lights across the road. Perfect location for those wanting to kayak and canoe. Excellent access to hiking trails from here ranging from Old Farm Trail; Lake Trail; Fisherman's; and Lake Shore.

[ Note: checkin building in the picture is no longer located there. Must use Cokeley Campground's bathhouse, just over the hill. ]





WEST VIRGINIA

state  
parks

NORTH BEND  
STATE PARK

### Jug Handle:



What was once the park's high use campground, is now the resulting 1994 dam-created fishing area. Located between River Run and Cokeley campgrounds, Jug Handle is the "middle of the road" location, exceptional for those wanting to fish. Muskie, carp, rock bass, creek chubs, and the like are fun to fish for at this location. No electricity or water. There are porta-johns available for use in this area. Excellent trail access by means of Southern Rail Road, Fisherman, Lake Trail, and dam access road to Overlook Trail.



**River Run and Cokeley Campgrounds:**

Troops are more than welcome to book at the “usual” campgrounds as they are available. This will be restricted to seasonal demand, booking capacity during desired times, and so forth.

Holidays and special event times will be blacked out for bookings.

Please call/email Park to ensure availability for all locations—especially these two campgrounds.

Superintendent: Kelsey Gilbert, [kelsey.r.gilbert@wv.gov](mailto:kelsey.r.gilbert@wv.gov)

Group Sales Coordinator: Michele Headrick, [Michele.l.headrick@wv.gov](mailto:Michele.l.headrick@wv.gov)